

ER-S2CM

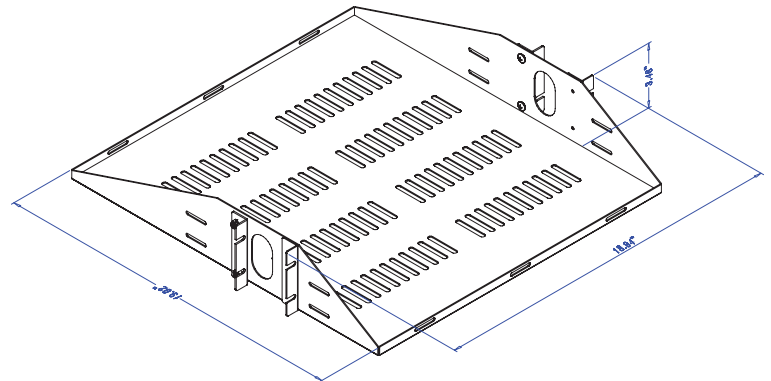
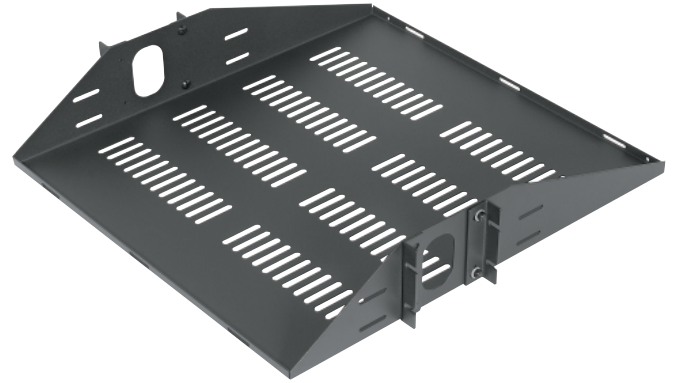
vented 2 space center mount rack shelf

Product Features:

- fits all components up to 17.375" wide
- 2 space racking height/ tray depth - 19"
- includes 10-32 and 12-24 rack screws
- load capacity - 50 lbs
- black static resistant powder coat finish

Product Specifications: *(for Architects & Engineers)*

The equipment rack shelf shall be the Video Mount Products (VMP) model ER-S2CM. The shelf shall be compatible with 19" standard telecommunications equipment racks without modification. The shelf shall fit all components up to 17.375" in width. The shelf shall be painted with a durable black static resistant powder coat finish. The load capacity shall be 50 lbs.



Video Mount Products

325 Log Canoe Circle
Stevensville, MD 21666
Phone: 410.643.6390
Fax: 410.643.6615
www.videomount.com

