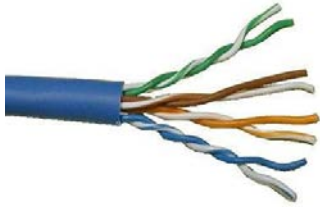


Technical Data Sheet- Category 6 Network

WEST PENN WIRE



2833 West Chestnut Street
Washington, PA 15301
Toll Free: (800) 245-4964
Fax: (724) 222-6420
www.westpenn-wpw.com

PART NUMBER:	4246
DESCRIPTION:	23 AWG.- 4 PAIR Solid bare copper conductors, unshielded with an overall jacket.
NEC RATING:	CMR
APPROVALS:	(UL) C(UL) Listed or c(ETL)us Listed
APPLICATION:	Indoor - Category 5E/6 Applications- Ethernet, IP Cameras, Digital Integration Meets or exceeds TIA/EIA 568B.2.1 Category 6 Specifications

Construction Parameters:

Conductor	23 AWG Bare Copper
Stranding	Solid
Number of Conductors	8 (4 Pair)
Insulation	Thermoplastic - .008"
Shield	None
Drain	None
Core Separator	Yes
Jacket Material	PVC
Overall Cable Diameter	0.225" Nom.
Approximate Cable Weight	30 Lbs/1M' Nom.
Flame Rating	UL1666

Electrical & Environmental Properties:

Operating Temperature Rating	-20°C To +60°C
Operating Voltage Rating	300 V RMS
DC Resistance per Conductor @ 20deg C	7.8 Ohms/100m Nom.
Mutual Capacitance	14pf/ft Nominal
Nominal Impedance	100 Ohms+/-15% (1-100Mhz)
Velocity of Propagation	66% Nominal
Delay Skew	45ns/100m MAX
Standards	TIA/EIA568-B.2 1
Insulation Colors	1.Blue/White-Blue, 2. Orange/White-Orange 3. Green/White-Green, 4. Brown/White-Brown
Jacket Color	Gray, White, Blue – Other Colors Available Example: 4246-BL
RoHS Compliant	Yes

Electrical Specifications:

Frequency: MHz	1	10	25	100	250	400
Insertion Loss: dB/100m	1.8	5.7	9.1	19.0	31.5	41.3
NEXT: dB/100m	74.3	59.3	53.3	44.3	38.3	35.3
ACR: dB/100m	72.3	53.3	46.3	24.5	5.5	--
PS-NEXT: dB/100m	72.3	57.3	51.3	42.3	36.3	33.3
PS-ACR: dB/100m	70.3	51.3	41.8	22.5	3.5	--
ELFEXT: dB/100m	67.8	47.8	39.8	27.8	19.8	15.8
PS-ELFEXT: dB/100m	64.8	44.8	36.8	24.8	16.8	12.8
RL: dB	20	25	24.3	20.1	17.3	15.9

Operating Temp	-20 C to +60 C
Storage Temp	-20 C to +75 C
Installation Temp	0 C to + 60 C
Delay Skew	45ns/100m Max

Mechanical Properties:

Max. Recommended Pull Tension	25 lbs.
Min. Bend Radius (Install)	1.00"

Accessories:

Connectors: Jacks

KJ458MT-C6C-xx
Xx: BK,BU, WH, YE, RD

Connectors: Plugs

32-6EZP – EZ Plugs
32-6198UL Cat 6

Boots

32-1900-xx – xx: Colors

Tools:

TL-135 110 Punch down tool
TL-114 Crimp Tool
TL-EZRJ45 Crimp Tool – EZ Plugs

Cable Assemblies:

C6C-114CC-xx

CC: Color: BK, BU, GY, RD, WH, YE

xx: Length Footage: 3,7,10,15,20,25

Patch Panels:

12458MD-C6C 12 Port
24458MC-C6C 24 Port
48458MD-C6C 48 Port

Specification Issue Date: 11/12

This document is the property of West Penn Wire.
The information contained herein is considered
Proprietary and not to be reproduced by any means
Without written consent of West Penn Wire

Standard Lengths are 1000ft.
The Jacket is sequentially footmarked.
The information presented here is, to the best of our
knowledge, is true and accurate. However, since
conditions of use are beyond our control, all
recommendations or suggestions are presented
without guarantee or responsibility on our part. We
disclaim all liability in connection with the use of
information contained herein or otherwise.