



## SNAP SHUT HOODS

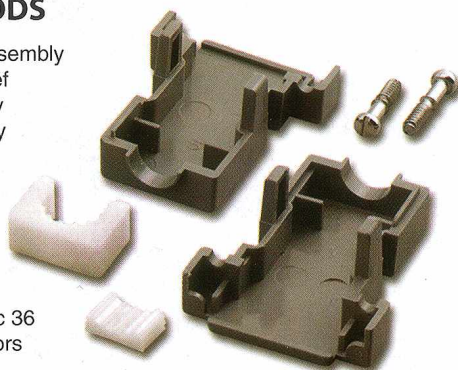
- Snap Shut Locking Assembly
- Snap Shut Strain Relief
- Includes All Necessary Hardware for Assembly

**DP-09CB**

**DP-15CB**

**DP-25CB**

**DP-36CB** For Centronic 36 Pin Connectors



## RIBBON CABLE D-SUB HOODS

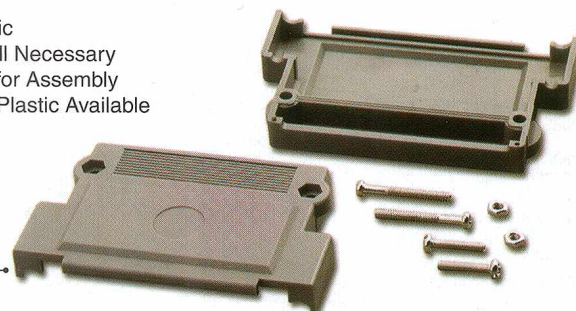
- Gray Plastic
- Includes All Necessary Hardware for Assembly
- Metalized Plastic Available

**DP-09CF**

**DP-15CF**

**DP-25CF**

**DP-37CF**

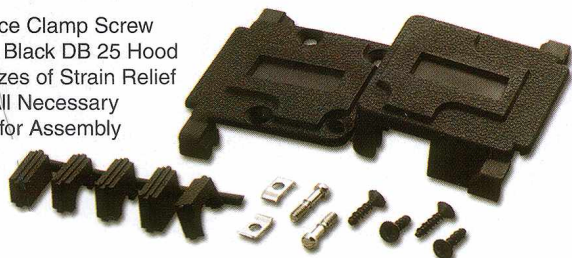


Please use only with IDC-(XX)FB or MB Series

## DUAL EXIT HOOD (180° & 90° Exit)

- Single Piece Clamp Screw Shut Style Black DB 25 Hood
- Various Sizes of Strain Relief
- Includes All Necessary Hardware for Assembly

**DP-25DA**



## SERIAL ADAPTOR HOODS

- Snap Shut Locking Assembly
- Includes All Necessary Hardware for Assembly

**Gray**

**DP-15/9C-G**

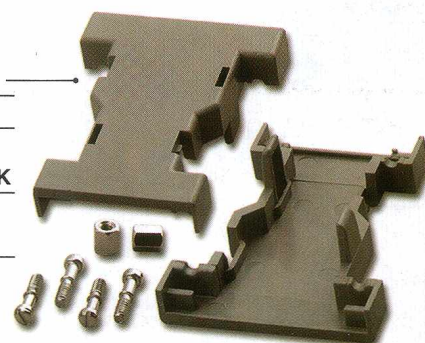
**DP-25/9C-G**

**Black**

**DP-25/9C-BK**

**Metalized**

**DN-25/9C**



## GENDER CHANGER HOODS

- Snap Shut Locking Assembly
- Includes All Necessary Hardware for Assembly

**Metalized**

**DN-09JBC**

**DN-15JBC**

**DN-25JBC**

**Plastic**

**DP-09JBC-G**

**Gray Color**

**DP-15JBC-G**

**DP-25JBC-G1**

**DP-25JBC-G2\***

**DP-25JBC-G3**

**Plastic**

**DP-09JBC-BK**

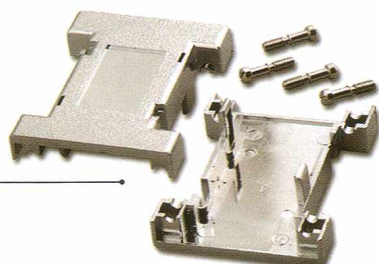
**Black Color**

**DP-15JBC-BK**

**DP-25JBC-BK1**

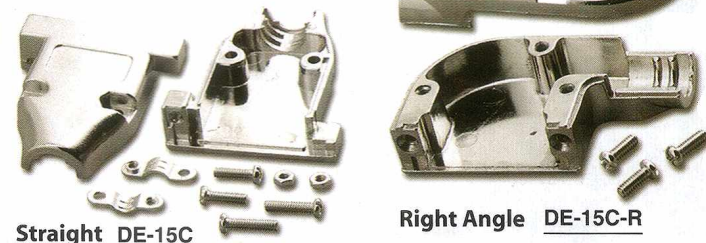
**DP-25JBC-BK2\***

**DP-25JBC-BK3**



## METAL ETHERNET HOOD

- Includes Necessary Hardware for Assembly
- Die Cast Metal Hood for AUI Cable
- Provides EMI Shielding
- Slide Latch and Locking Post Not Included



**Straight** **DE-15C**

**Right Angle** **DE-15C-R**

Slide Latch and Locking Post. Page 110

## METAL HOODS

- Metal Clamp Strain Relief (Not Included in DM-9C)
- Includes Necessary Hardware for Assembly
- 9Pin Has Two Cable Exit Diameter Options Available
- Die Cast Metal Hood
- Provides EMI Shielding

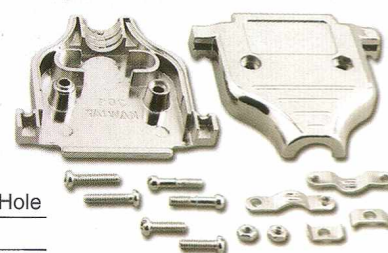
**DM-15C**

**DM-25C**

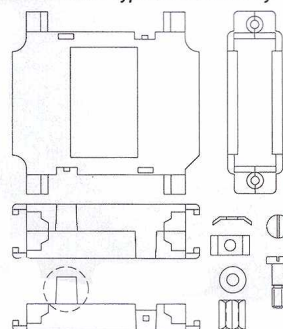
**DM-37C**

**DM-9C/6** 6.5 mm Cable Exit Hole

**DM-9C/8** 8.5 mm



\* Used for Solder Type Connector Only



**DP-25JBC-BK2**