

# Panic Switch

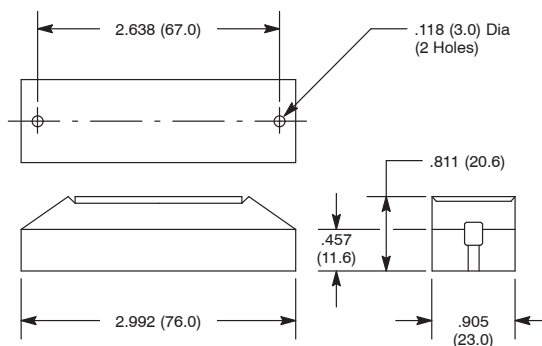
## Features

- Surface Mount Type
- Push Button Function
- Emergency Marking on the Button



NTE Type No.	Circuitry	Action	Actuator	Diag No.
54-634	SPST-NO	NO for Closed Loop System	Microswitch	S105

## S105



## Specifications

**Contact Rating:** 10W/VA  
**Contact Resistance:** 150 milliohms.  
**Contact Material:** Silver over Palladium  
**Switching Voltage:** 200 VDC max.  
**Switching Current:** 500mA max.  
**Insulation Resistance:** 10 gigohms  
**Shock Resistance:** 30G for 11mS  
**Vibration Resistance:** 20G (10 to 1000Hz)  
**Life Expectancy:** 20,000,000 cycles (resistive load, 12VDC, 250mA)  
**Terminal Type:** Y Type Tin Plated Brass

# Magnetic Plunger Switch

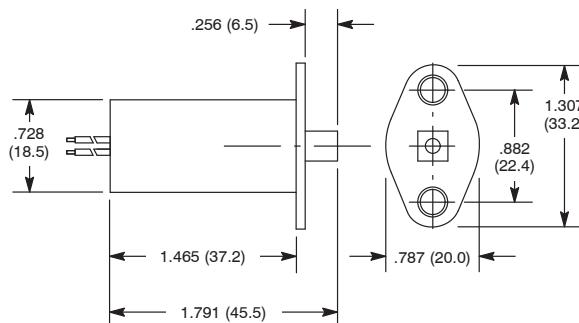
## Features

- 3/8" Dia Mounting Hole
- Flange for Reliable Retention
- 3mm Pre-Travel Stroke and 7mm Overall Operating Stroke
- 18" Long Wire Leads
- Screw Provided



NTE Type No.	Circuitry	Action	Actuator	Diag No.
54-635	SPST-NO	NO for Closed Loop System	Magnet	S106

## S106



## Specifications

**Contact Rating:** 10W/VA  
**Contact Resistance:** 150 milliohms.  
**Contact Material:** Ruthenium Oxide over Palladium  
**Switching Voltage:** 200 VDC max.  
**Switching Current:** 500mA max.  
**Insulation Resistance:** 10 gigohms  
**Shock Resistance:** 30G for 11mS  
**Vibration Resistance:** 20G (10 to 1000Hz)  
**Life Expectancy:** 20,000,000 cycles (resistive load, 12VDC, 250mA)  
**Terminal Type:** Wire Leads  
**Mounting Hole:** .375" (9mm)