

## Features

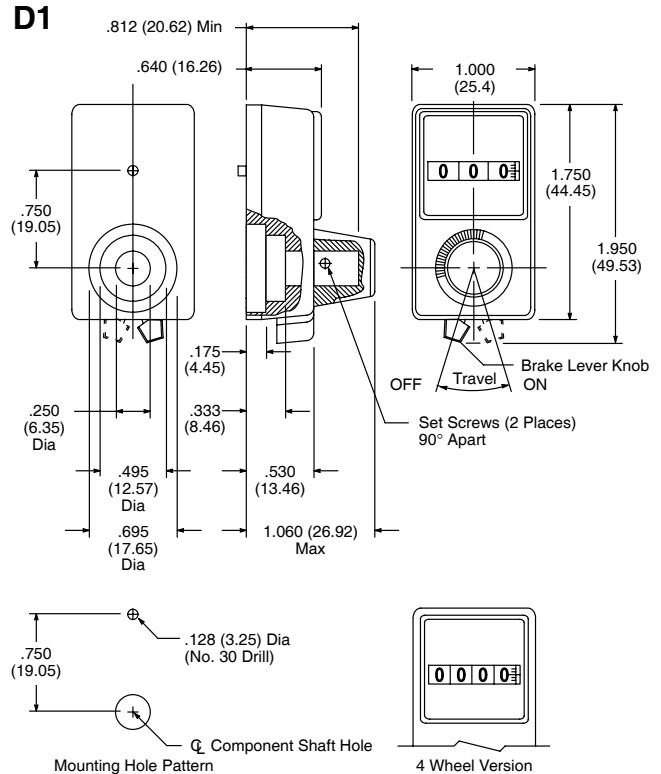
- 3 digit or 4 digit types
- 2 No. 4-40 hex socket set screws for mounting
- Brake lever knob
- Open window display
- Satin clear anodize finish



Spectrol No.	NTE Part No.	Numeric Display	No. of Turns	Diag No.
15-1-11	503-0001	3 Digit	10	D1
15-2-11	503-0002	4 Digit	100	D1

# Spectrol Model 15

Dial – 1" x 1 3/4" rectangular, 1/4" dia shaft



## Specifications

### Operation

**3 Digit (10 turn):** The left digit indicates the number of complete revolutions of the turning knob and the right two digits indicate the percent of a revolution. The unit registers a total count of 999.

**4 Digit (100 turn):** The left two digits indicate the number of complete revolutions of the turning knob and the right two digits indicate the percent of a revolution. The unit registers a total count of 9999.

**Minor Scale Division:** 1/500 turn

**Indication:** 0 to 9.99 turn (3 Digit), 0 to 99.99 (4 Digit)

**Accuracy:** ±0.2% of knob position

**Rotation:** The indication shall increase with clockwise rotation.

**Transfer Point:** between 9.2 and 0

### Mechanical

**Shaft Bore:** 0.250"

**Runout:** 0.004 in/in (Note 1)

**Mounting:** The spring detented knob shall be removed using a straight pull, exposing two No. 4-40 hex socket set screws for mounting the dial directly to the component shaft (hex key included).

**Note 1.** Dial to be free running and without binds when axis of drive sleeve is perpendicular to mounting surface within the specified dimension.