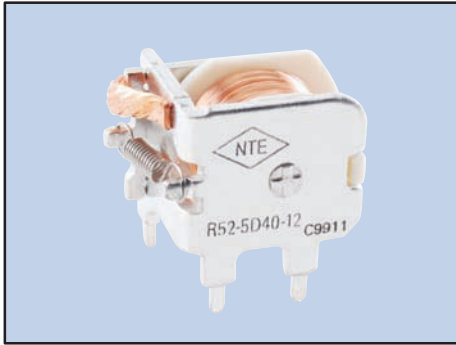


Automotive Relays

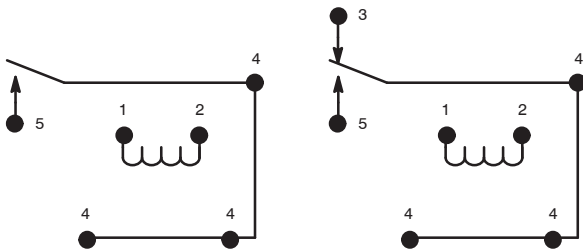
R52 Series

Features

- P.C. Board Mountable
- Standard U.S. Footprint
- Subminiature Size
- Open Frame
- SPST & SPDT Versions



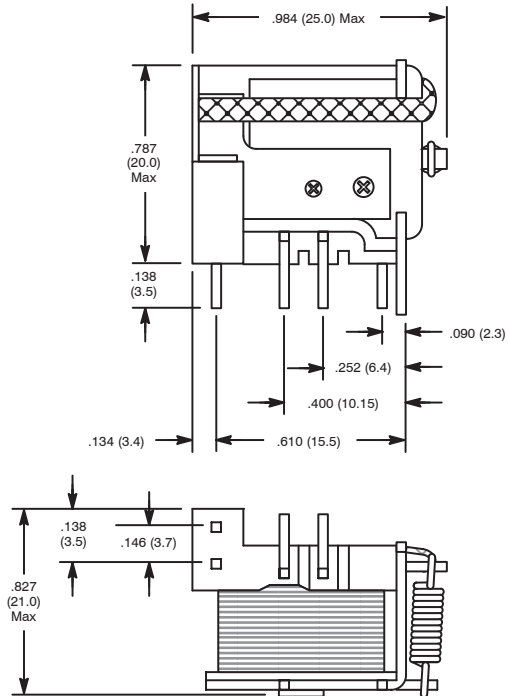
SPST-NO, 1 Form "A" SPDT, 1 Form "C"



DC OPERATED						
NTE Type No.	Nom. Volt.	Contact Arr.	Coil Res. Ohms (Typ)	Nom. Power	Max. Contact Cur. @ 14VDC	Diag No.
R52-1D40-12	12VDC	SPST-NO	120	1.2W	40A	D48
R52-5D40-12	12VDC	SPDT	120	1.2W	40A	D48

Subminiature, 40 Amp, PC Mountable, Heavy Duty Automotive Relay.

D48



Electrical Specifications

Contact

Rating: 40 Amp @ 14VDC
 Max. Switching Voltage: 60VAC, 75VDC
 Resistance: 50mΩ Max
 Material: AgSnO₂

Coil

Coil Voltages: See Chart
 Pick-up Voltages: 70% of rated voltage
 Drop-out Voltages: 10% of rated voltage
 Max. Allowable Voltage: 120% of rated voltage
 Resistance: See Chart

Operational Characteristics

Timing Values: Operate Time: 10 mS typ
 Release Time: 10 mS typ

Insulation Characteristics

Dielectric Strength

Between Coil & Contacts: 750 VRMS
 Between Contacts: 750 VRMS
 Insulation Resistance: 100MΩ Min

Environmental Characteristics

Operating: -30°C to +85°C

Life

Mechanical: 10 x 10⁶ (No Load)
 Electrical: 10 x 10⁴ (Resistive Load)

Weight

Std: 0.63 oz (18 grams) approx