

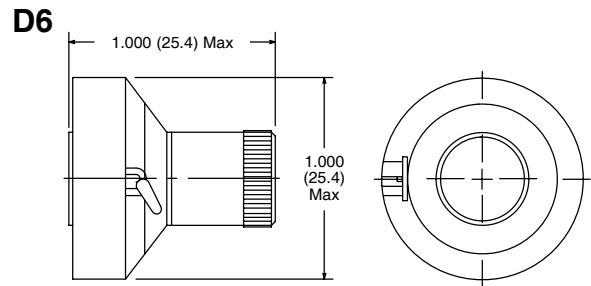
Features

- Uncalibrated
- Black or natural aluminum (clear) anodized
- Available with brake lever



KILO 600 Series

Dial – 1” diameter, 1/4” dia shaft, aluminum



Specifications

Mechanical

1” uncalibrated dials are used where no calibrations are necessary or where measurement is displayed elsewhere such as an LED readout.

Shaft Bore: 0.250”

Shaft Extension Beyond Face of Panel: .600” Min, .800 Max

Bushing Extension Beyond Face of Panel: .125” Min, .297” Max thread (full thread)

KILO No.	NTE Part No.	Numeric Display	No. of Turns	Brake Lever	Finish	Diag No.
612	505-0007	None	Infinite	Yes	Black	D6
662	505-0008	None	Infinite	Yes	Clear	D6