



Middle Atlantic Products

EXCEPTIONAL SUPPORT & PROTECTION™

WM Series

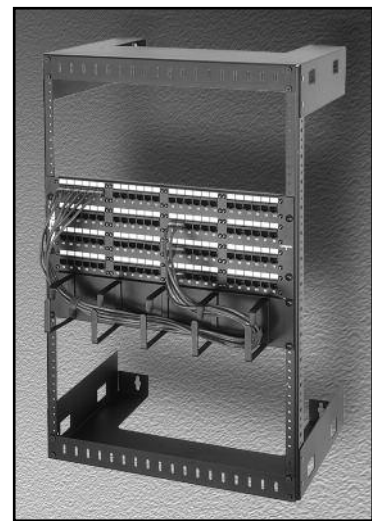


EIA/TIA Compliant

WM Series 19" Wall Mount Open Frame Racks Self-squaring rack for mounting virtually any data or telecommunications equipment

Features

- Self-squaring design
- Available in 12" and 18" depths and 8, 15, and 30 rackspace sizes
- Fixed design prevents kinking or breaking of glass fibers
- 10-32 rack screws included (25 qty for 8 and 15 rackspace sizes, 50 qty for 30 rackspace size)
- Ships knocked-down via UPS
- Durable black powder coat finish



WM-15-12

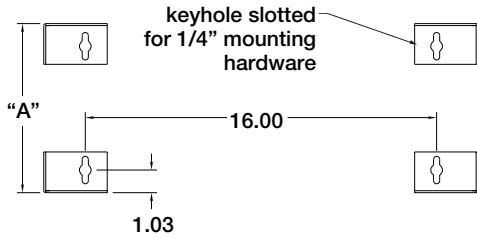
Architects' and Engineers' Specifications

EIA/TIA compliant wall mount open frame rack shall be Middle Atlantic Products model # WM-__-__ (refer to chart). WM shall be constructed of the following materials: top and bottom shall be 14-gauge steel, rackrail shall be 11-gauge steel with tapped 10-32 holes in universal EIA spacing. WM shall be finished in a durable black powder coat. WM shall be GREENGUARD Indoor Air Quality Certified for Children and Schools. WM shall be RoHS EU Directive 2002/95/EC compliant. WM shall be manufactured by an ISO 9001 and ISO 14001 registered company. Wall mount open frame rack shall be warranted to be free from defects in material or workmanship under normal use and conditions for the lifetime of the product.

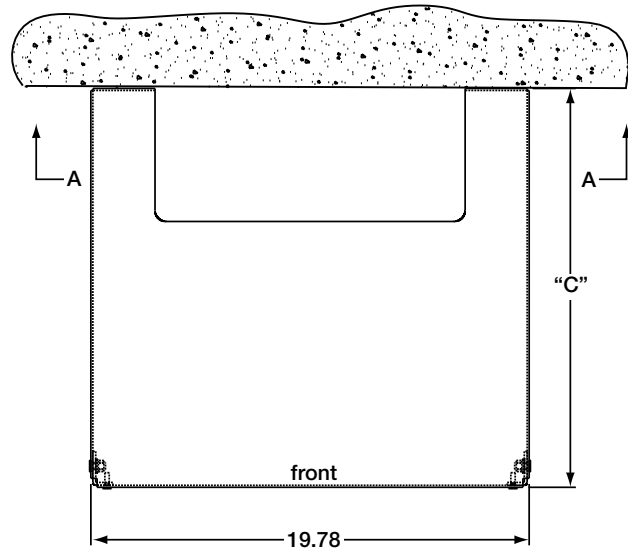
CUSTOMIZABLE SPECIFICATION CLIPS AVAILABLE AT MIDDLEATLANTIC.COM

WM Series basic dimensions

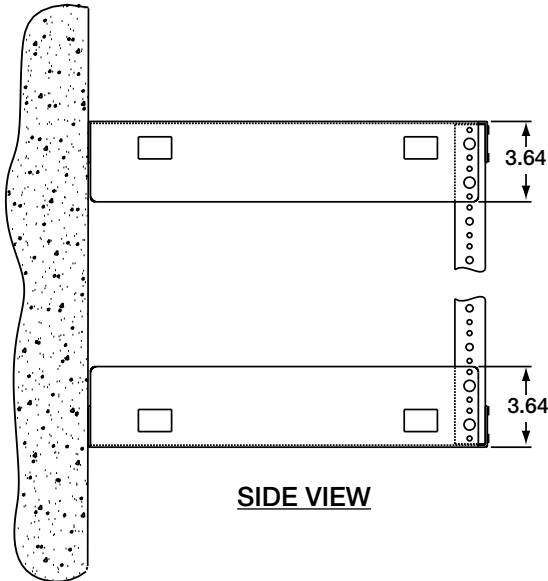
ALL DIMENSIONS IN INCHES UNLESS OTHERWISE NOTED



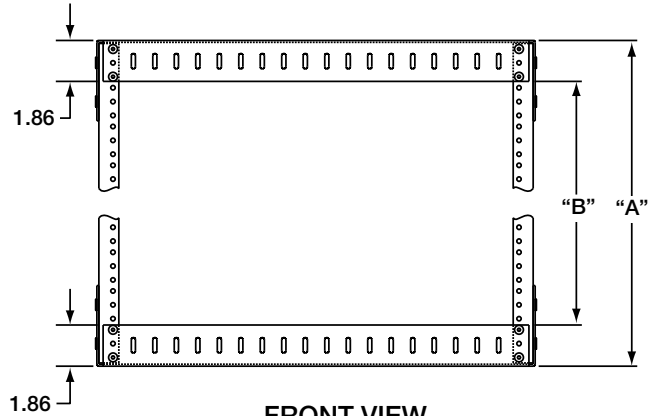
**SECTION A-A
(WALL MOUNT DETAILS)**



TOP/BOTTOM VIEW



SIDE VIEW



FRONT VIEW



PART #	"A" OVERALL HEIGHT	"B" RACKING HEIGHT/ RACK SPACES	"C" DEPTH	WEIGHT CAPACITY
WM-8-12	17.75	14.00/ 8 SP	12.00	200 lbs.
WM-15-12	30.00	26.25/ 15 SP	12.00	200 lbs.
WM-30-12	56.25	52.50/ 30 SP	12.00	175 lbs.
WM-8-18	17.75	14.00/ 8 SP	18.00	150 lbs.
WM-15-18	30.00	26.25/ 15 SP	18.00	150 lbs.
WM-30-18	56.25	52.20/ 30 SP	18.00	125 lbs.