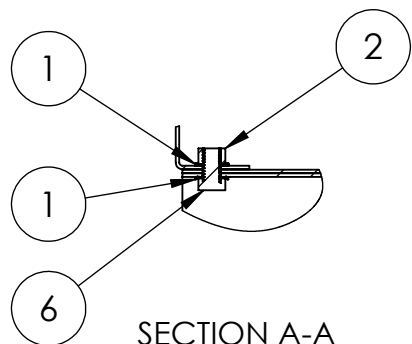
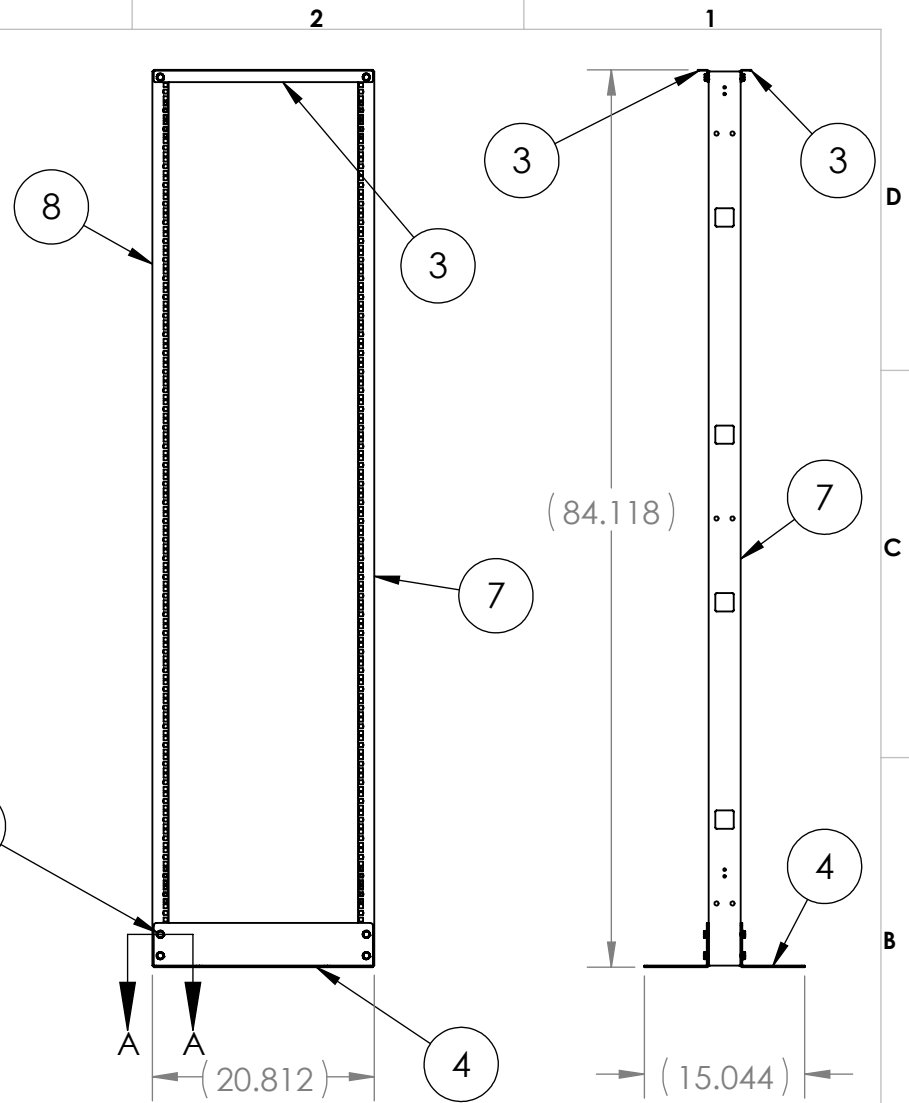


ITEM NO.	PART NUMBER	DESCRIPTION	QTY.
1	hw-1183	WASHER, LOCK, EXTERNAL TOOTH-.375ID	24
2	hw-sn-001	NUT, HEX- 3/8-16	12
3	KH-1097	BRACE, UPPER, UNIVERSAL, 2-POST RACK	2
4	KH-1096	BASE, UNIVERSAL- 2-POST RACK	2
5	PP-1016	10-32 RACK SCREWS (QTY 25)	1
6	HW-1149	SCREW, HEX, 3/8-16 X .625	12
7	A-2581	RAIL, CAGE NUT, RIGHT -45U	1
8	A-2582	RAIL, CAGE NUT, LEFT -45U	1



SECTION A-A
SCALE 1 : 4
TYP 12 PLACES

KENDALL HOWARD CONFIDENTIAL
THE INFORMATION CONTAINED IN THIS DRAWING IS THE SOLE PROPERTY OF KENDALL HOWARD. ANY REPRODUCTION IN PART OR AS A WHOLE WITHOUT THE WRITTEN PERMISSION OF KENDALL HOWARD IS STRICTLY PROHIBITED.

MANUFACTURING COMMENTS:

UNLESS OTHERWISE SPECIFIED, ALL DIMENSIONS ARE IN INCHES.
TOLERANCES:
FRACTIONAL: ±1/8
ANGULAR: ±1°
TWO PLACE DECIMAL: ±.03
THREE PLACE DECIMAL: ±.010
HOLE: ±.005

MATERIAL: SEE BOM
SURFACE AREA (in²): NA
FINISH ID: NA
FINISH DESCRIPTION: NA

DO NOT SCALE DRAWING

APPROVAL	DATE
DRAWN BS	02/18/2021
DESIGN BS	02/18/2021
ENG APPR	
MFG APPR	

LEGACY Part Number:

CLASSIFICATION:

THIRD ANGLE PROJECTION

INTERPRET DIMENSIONS AND TOLERANCES PER ASME Y14.5-2009

KENDALL HOWARD

TITLE:
2-POST RACK ASSEMBLY, CAGE NUT- 45U

SIZE	DWG. NO.	REV
A	1940-3-120-45	A

SCALE: 1:24 WEIGHT (lbs): 33.56 SHEET 1 OF 1

ECO No: Description: By: Date: App By:

5

4

3

2

1

D

C

B

A

D

C

B

A