

Snap Action, Standard



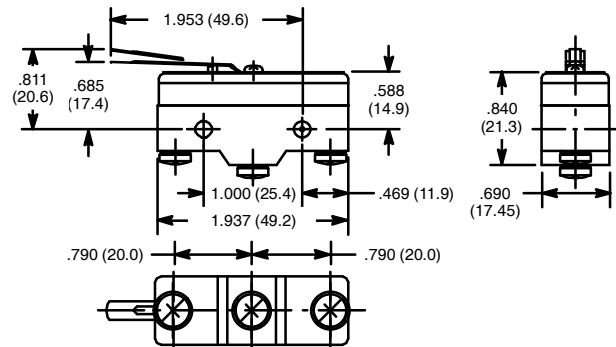
Features

- Actuator: Hinge Level



NTE Type No.	Circuitry	Max. Pre-Travel	Min. Over Travel	Max. Operating Force	Max. Differential	Diag No.
54-428	SPDT	0.157"	0.063"	155g	0.051"	S53

S53



Specifications

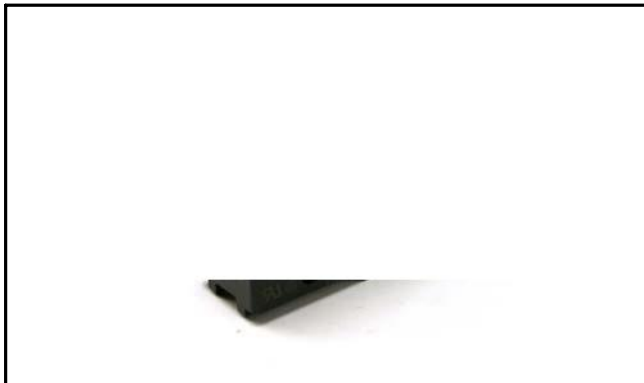
Current Rating: 15A 125/250/480VAC, 0.5A 125VDC, 0.25A 250VDC
 1/8 HP 125VAC, 1/4 HP 250VA
Contact Resistance: 50 Milliohms (max.) initial
Insulation Resistance: 100 Megohms at 500VDC
Dielectric Strength: 1000VAC (50/60Hz for 1 minute)
Temperature Rating: -13°F to +176°F (-25°C to +80°C) with no icing
Electrical Life: 500,000 cycles min. (under rated load)
Mechanical Life: 20,000,000 cycles min.
Terminal Type: Screw Terminal

Snap Action, Standard



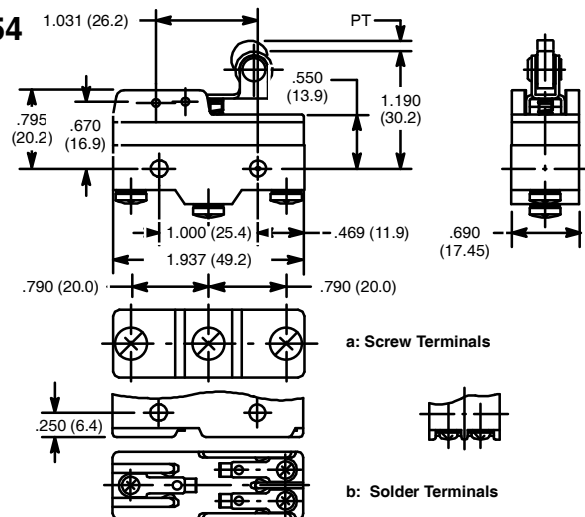
Features

- Actuator: Short Hinge Roller Lever



NTE Type No.	Circuitry	Max. Pre-Travel	Min. Over Travel	Max. Operating Force	Max. Differential	Diag No.
54-429	SPDT	0.22"	0.05"	70g	0.02"	S54b
54-440	SPDT	0.09"	0.095"	160g	0.02"	S54a

S54



Specifications

Current Rating: 15A 125/250/480VAC, 0.5A 125VDC, 0.25A 250VDC
 1/8 HP 125VAC, 1/4 HP 250VA
Contact Resistance: 50 Milliohms (max.) initial
Insulation Resistance: 100 Megohms at 500VDC
Dielectric Strength: 1000VAC (50/60Hz for 1 minute)
Temperature Rating: -13°F to +176°F (-25°C to +80°C) with no icing
Electrical Life: 500,000 cycles min. (under rated load)
Mechanical Life: 20,000,000 cycles min.
Terminal Type: Refer to Diag No. in Table